

Portion of DCNP's "Trail Guide", published April 2008.
 Web & printed versions underwritten by
 the Efroymson Fund, a CICF Fund.

Wildlife Species in the Park

Mammals, Reptiles, Amphibians

Insects and Birds

Little Brown Bat

(*Myotis lucifugus*) Nocturnal mammal valued for eating mosquitos/other insects. Hibernates winters in caves.



Woodchuck/Groundhog

(*Marmota monax*) Largest member of squirrel family. Eats plants (herbivore) during the day (diurnal).



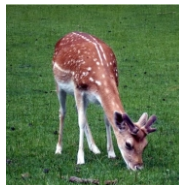
Red Fox (*Vulpes vulpes*)

Dog family. Has one mate for life. Hunts mostly at night (nocturnal) for mice, rabbits, berries, eggs, insects.



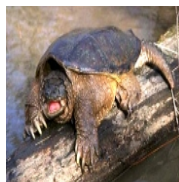
White-Tailed Deer

(*Odocoileus virginianus*) Indy's current largest wild mammal emerges from woods to eat plants at night.



Snapping Turtle (*Chelydra serpentina*)

Fresh-water reptile with long tail and strong jaw. Hides in mud to catch fish, frogs, ducks, etc.



Western Chorus Frog

(*Pseudacris triseriata*) Small (up to 1½") w/3 dark stripes on back. Eats mosquitoes. Spring mating song: carreek!



Northern Water Snake

(*Nerodia sipedon*) Bites but no venom. Large dark bands. Mistaken for cottonmouth or copperhead. Eats fish, frogs.



Tiger Swallowtail: (*Papilio glaucus*)

Feeds on Tulip Poplar trees. Females are yellow w/black marks, or black w/blue. 2.5" to 4.5".



Monarch Butterfly:

(*Danaus plexippus*) Migrates from Canada to South America each year. Milkweed is its larval host.



Wheelbug: (*Arilus cristatus*)

Curved thorax resembles a notched wheel. Has a painful bite & eats other bugs by sucking their blood.



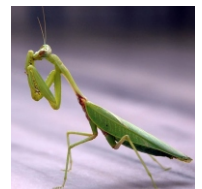
Halloween Pennant:

(*Celithemis eponina*) As it forages on plants for other bugs to eat, it pivots in the wind like a pennant.



Praying Mantis: (1,700 varieties)

½ to 6" w/bent front arms. Eats other bugs. Sees up to 60 feet away & turns its head 180 degrees.



Red-Tailed Hawk: (*Buteo jamaicensis*)

Daytime (diurnal) predator eats pests (i.e. mice, moles) and even snakes and other birds.



Barred Owl: (*Strix varia*)

Distinctive call sounds like, "Who cooks for you?" Nocturnal (nighttime) bird of prey eats same as a hawk.

